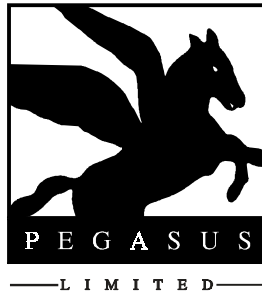


Viaclin™

Models 2503 and 2502



User Guide



VIACLIN™
Alternating Pressure Mattress Overlay
Models 2503 and 2502

The **VIACLIN** systems are for patients with some mobility problems and/or can be repositioned, who are vulnerable to pressure ulcer development and/or who have existing tissue damage.

PART I

VIACLIN™
Model 2503



PART I

VIACLIN
Model 2503

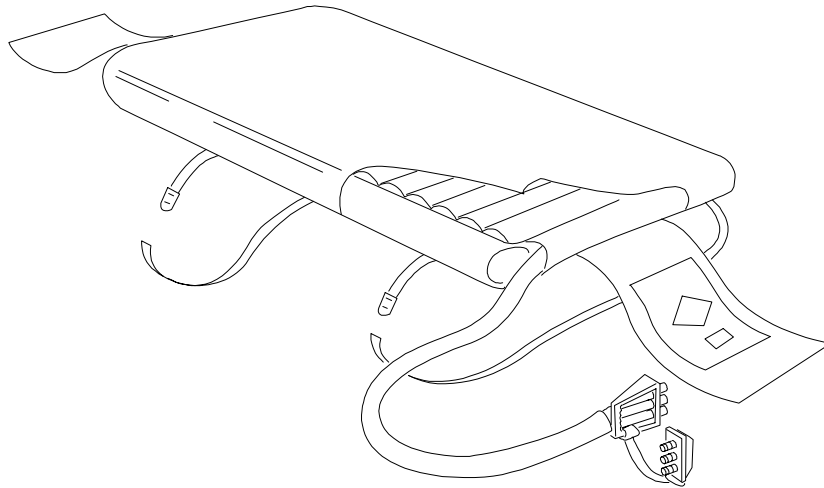
CONTENTS

| SECTION | | PAGE |
|----------------|---|-------------|
| A | GETTING STARTED | I-2 |
| | List of Parts | I-2 |
| | Setting Up | I-3 |
| B | PROFILING AND KNEE BREAKING | I-6 |
| C | MOVING THE BED AND POWER CUTS | I-6 |
| | Overlay | I-6 |
| | Power Unit | I-7 |
| D | CPR (CARDIO PULMONARY RESUSCITATION) | I-7 |
| | System Operating Normally | I-7 |
| | While Moving the Bed | |
| E | DEFLATION, REMOVAL, CARRYING AND STORAGE | I-8 |
| | Power Unit | I-8 |
| | Overlay | I-8 |
| F | ALARMS AND FAULT FINDING | I-8 |
| | Alarms | I-8 |
| | Fault Finding | I-9 |
| G | CLEANING | I-10 |
| | Overlay and Cover | I-10 |
| | Power Unit | I-11 |
| H | TECHNICAL DATA | I-12 |

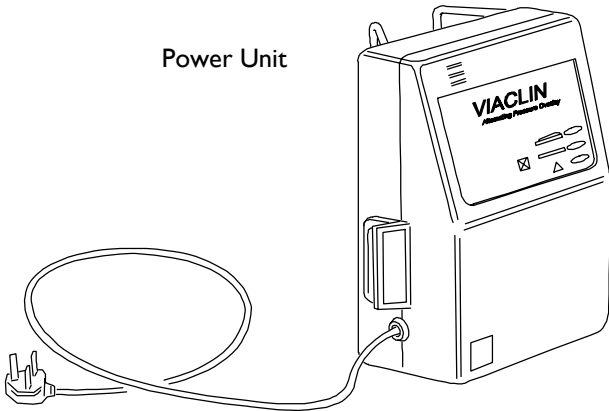
SECTION A – GETTING STARTED

LIST OF PARTS

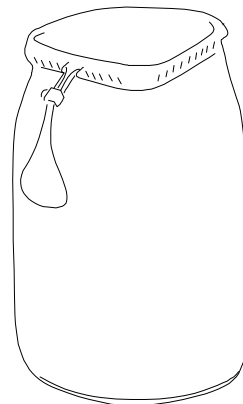
Mattress



Power Unit



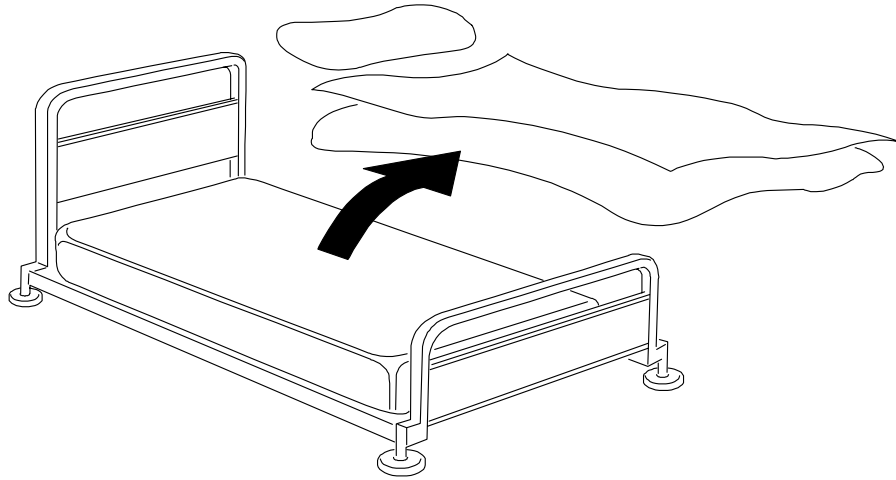
Storage Bag



SETTING UP

CAUTION: Use only on top of the existing bed mattress.

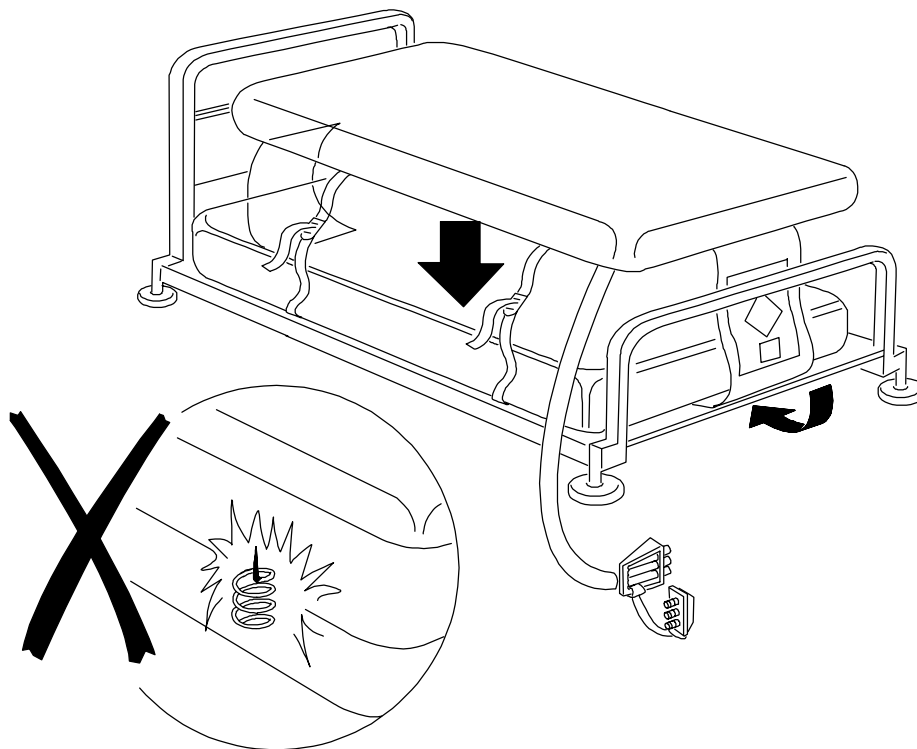
1. Remove the bedding from the bed.



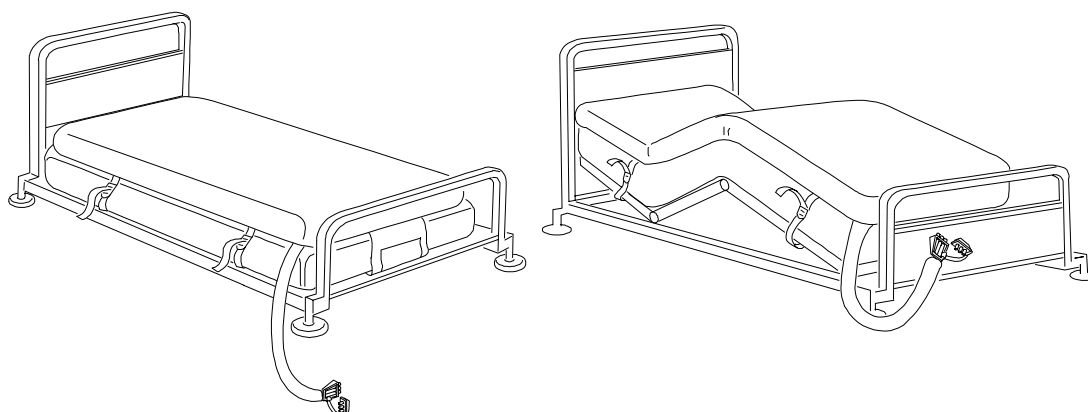
2. Place the Overlay on top of the bed mattress with the printed end flap at the bed foot end.

Tuck the two end flaps under the bed mattress.

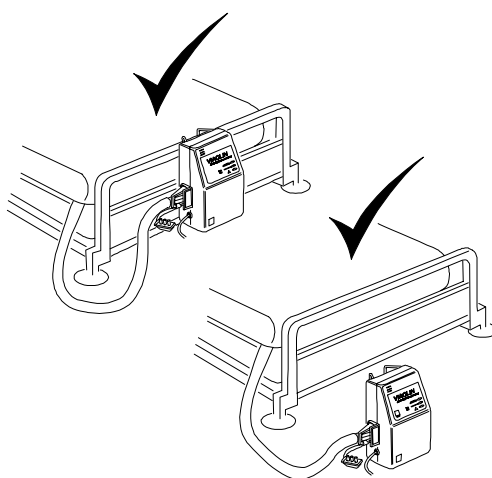
Ensure there are no sharp objects to damage the Overlay.



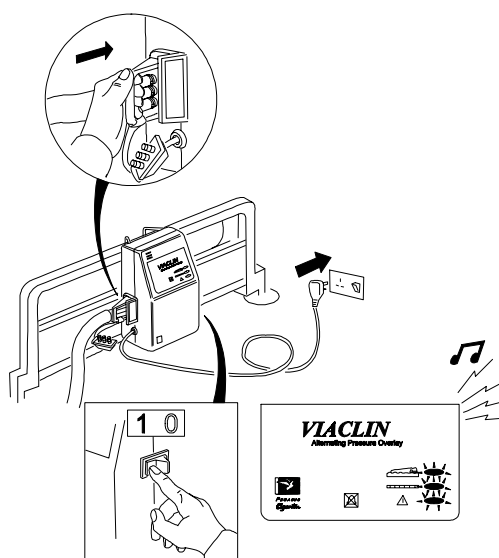
3. Secure the Overlay straps loosely to the moving parts of the bed frame, if applicable. Do not secure to removable head or foot boards.



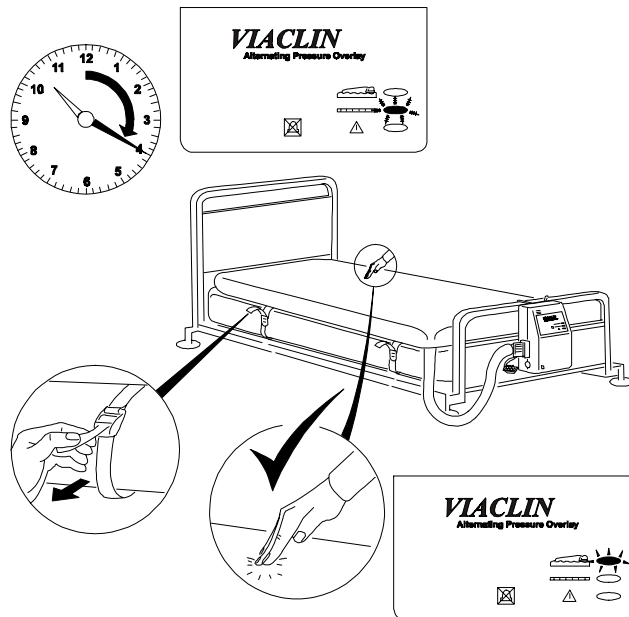
4. Hang the power unit on the bed or place on the floor.



5. Connect the airpipe CPR handle to the power unit with the 'CPR' label uppermost. Plug the mains lead into a suitable electrical socket and switch on the power unit. The audible alarm will sound and the three front panel lights will flash on then off once to complete the self test phase. The amber light will flash and continue flashing while the mattress is inflating.

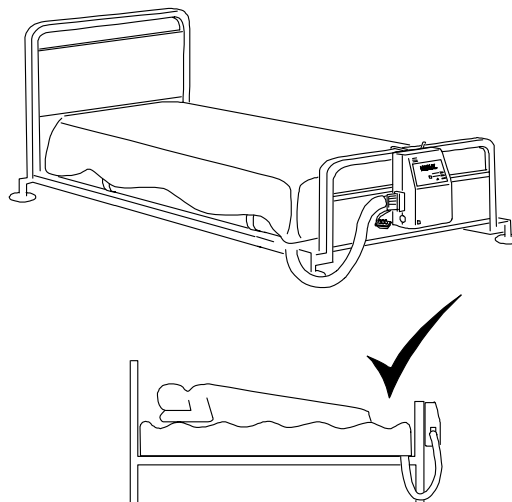


6. The system will take approximately 20 minutes to reach full inflation pressure, at which time the green NORMAL light will come on and the amber light will extinguish. During this start up phase the red FAULT light may come on and the audible alarm sound, if this occurs turn the power unit off and back on again to reset the alarm.



7. Once inflated, check the securing straps and tighten if required. For maximum benefit, use only one sheet loosely placed over the mattress. If the sheet is tucked in ensure that it is left loose over the mattress to avoid hammocking.

Once a patient is placed on the mattress the system will adjust automatically to the patient characteristics (weight/position) to provide optimum clinical benefit for each patient. The mattress may feel firm at first until it has adjusted to the individual. Allow approximately 15 minutes for this automatic adjustment to be completed.



If the mattress does not perform as described above, please refer to Section F of this guide 'Alarms and Fault Finding'.

SECTION B – PROFILING AND KNEE-BREAKING

The system may be used while the bed is in the profiled or knee-break position:

1. With the bed in its present position, loosen or release the Overlay securing straps.
2. Change the bed to the required position (profile or knee-break).
3. Re-secure the securing straps.

NOTE: Straps must be attached to moving parts of the bed frame to avoid jamming the bed mechanism or stretching the overlay.

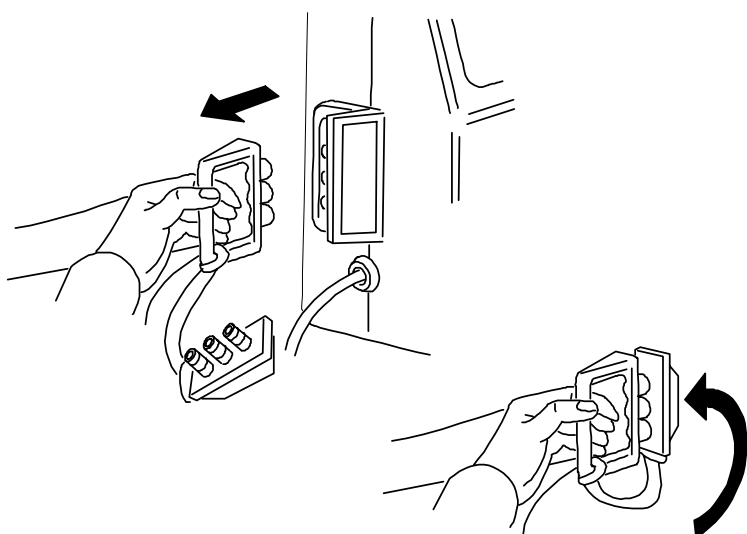


SECTION C – MOVING THE BED AND POWER CUTS

CAUTION: The patient will not receive the benefit of the VIACLIN system while it is disconnected and the power unit is switched off. Therefore the system should be reconnected as soon as possible once the bed has been moved to its new position.

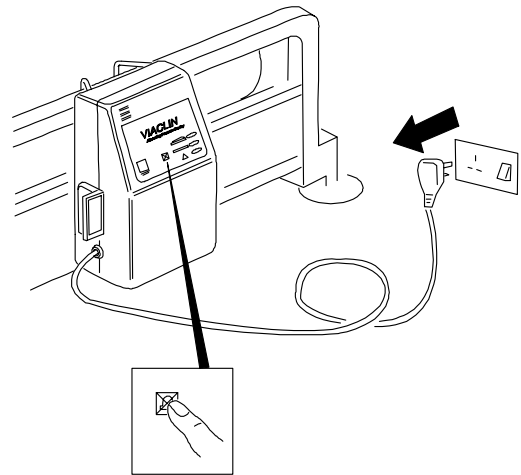
If you need to move the bed with the Overlay still inflated or in the event of a major mains power failure, carry out the following procedure:

- I. **OVERLAY**
 - a. Disconnect the CPR handle from the power unit.
 - b. Quickly connect the transport connector to the CPR handle - this will stop the Overlay deflating.



2. **POWER UNIT**

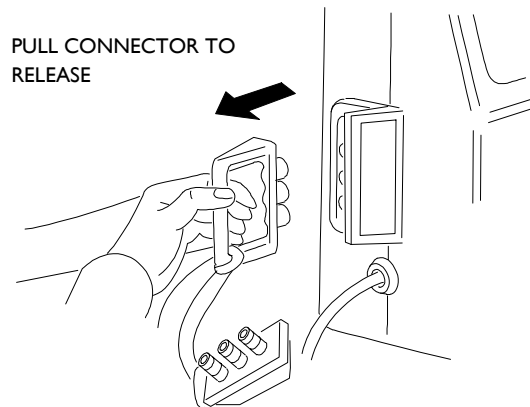
- a. Switch off and reset the power-down alarm. Disconnect from the mains.
- b. The overlay will remain inflated for at least 24 hours. The bed can now be moved.



SECTION D – CPR (CARDIO PULMONARY RESUSCITATION)

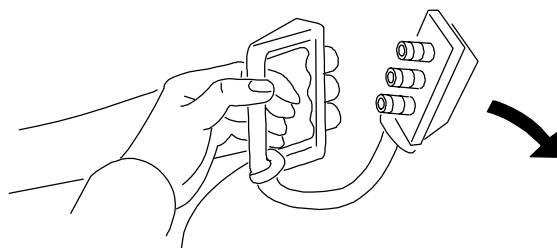
SYSTEM OPERATING NORMALLY

In the event of cardiac arrest, disconnect the CPR handle from the power unit as shown. The Mattress will immediately begin to deflate, allowing cardio pulmonary resuscitation.



WHILE MOVING THE BED

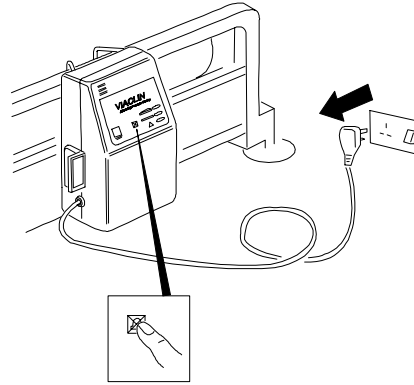
Disconnect the transport connector from the CPR handle.



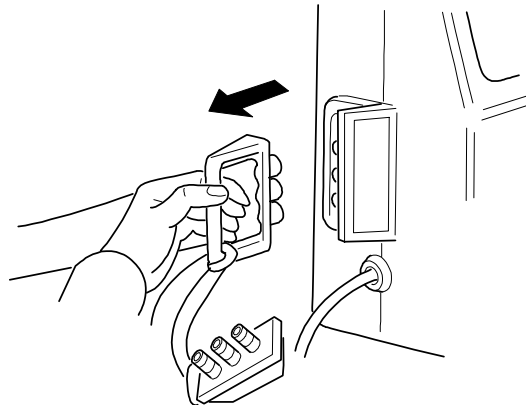
SECTION E – DEFLATION, REMOVAL, CARRYING AND STORAGE

POWER UNIT

1. Switch off.
2. Silence alarm.
3. Disconnect from mains.

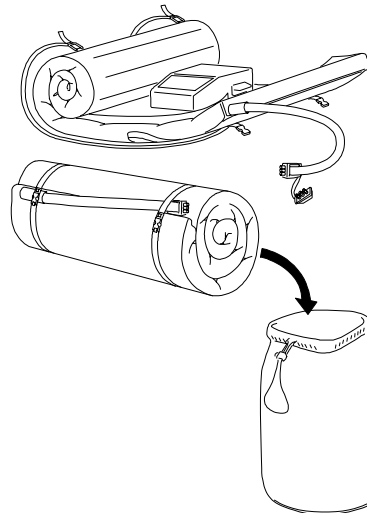


4. Disconnect airpipe.
5. Remove from bed.



OVERLAY

1. Remove securing straps from mattress.
2. Roll up the Overlay with the power unit inside. Place in storage bag.



SECTION F – ALARMS AND FAULT FINDING

ALARMS

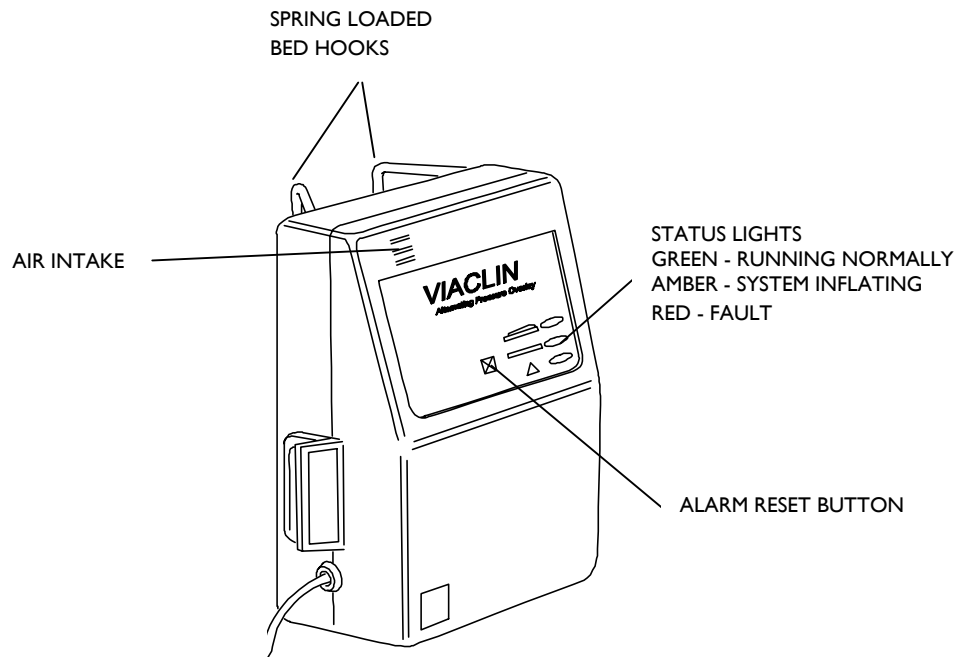
The **VIACLIN** system is equipped with a sophisticated set of alarm functions. These alert the user to the status of the available mains supply and any mattress defect.

In normal conditions with mains power available, the power unit turned on and the mattress fully inflated and alternating, the power unit mains switch and the green status light on the power unit front panel will both be illuminated.

If there is a mains power failure or the power unit is switched off, an audible alarm will be heard and all the lights on the power unit and mains switch will go out. The audible alarm may be cancelled by pressing the reset button on the power unit.

If the system develops a fault while in use, the red fault light will flash and an audible alarm will be heard. The audible alarm may be cancelled by pressing the reset button on the power unit, (if the alarm is cancelled in this way it will return after 30 minutes) or turning the mains power switch on the side of the power unit to the OFF (O) position and then back ON (I).

NOTE: The red fault light may flash in a series of two, three or four flashes. This is to assist the Distributor if contacted about the fault.



FAULT FINDING

| SYMPTOM | ACTION |
|--|--|
| No lights on power unit | Check power unit is connected to the mains power supply and that the power unit switch is turned to the ON (I) position. |
| Status light red and alarm sounding, or alarm sounding but no lights | Turn the mains switch on the power unit OFF then ON again: <ol style="list-style-type: none"> If the mains light does not illuminate, mains power to the power unit has been lost. Check that the power unit is connected to the mains supply and that the power unit switch is turned to the ON (I) position If the alarm clears then returns after 30 minutes, check air connection between power unit and mattress, ensuring that all air connectors are pushed fully home and the air pipe is not folded or bent causing air flow to be reduced. Turn mains switch on power unit OFF then ON again |

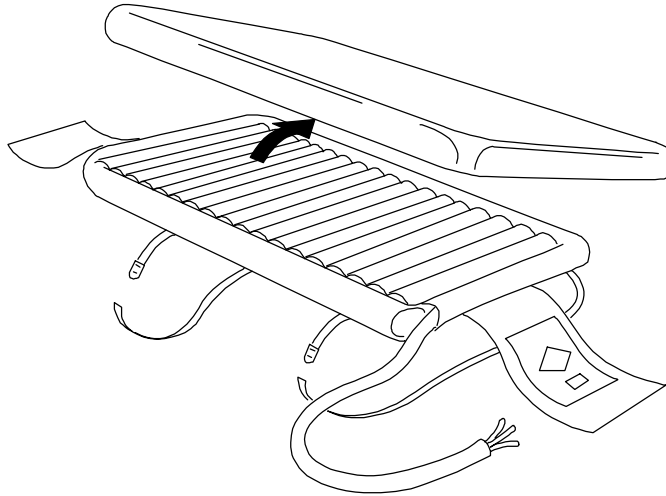
If the problem persists, contact your local distributor.

SECTION G – CLEANING

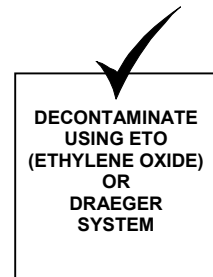
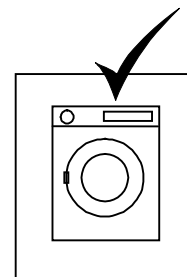
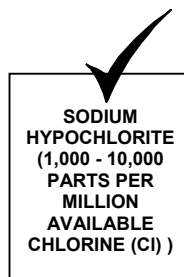
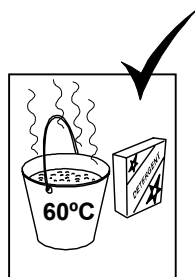
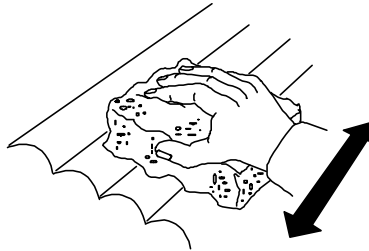
It is recommended that the system is cleaned regularly and after each patient use.

OVERLAY AND COVER Cleaning procedure

In many cases it will only be necessary to remove the overlay cover for cleaning. Where there is obvious soiling, a full cleaning or sterilization procedure will have to be carried out.



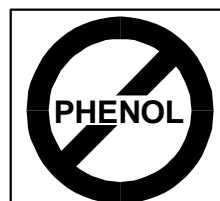
Ensure overlay and cover are fully dry before use



COVER ONLY

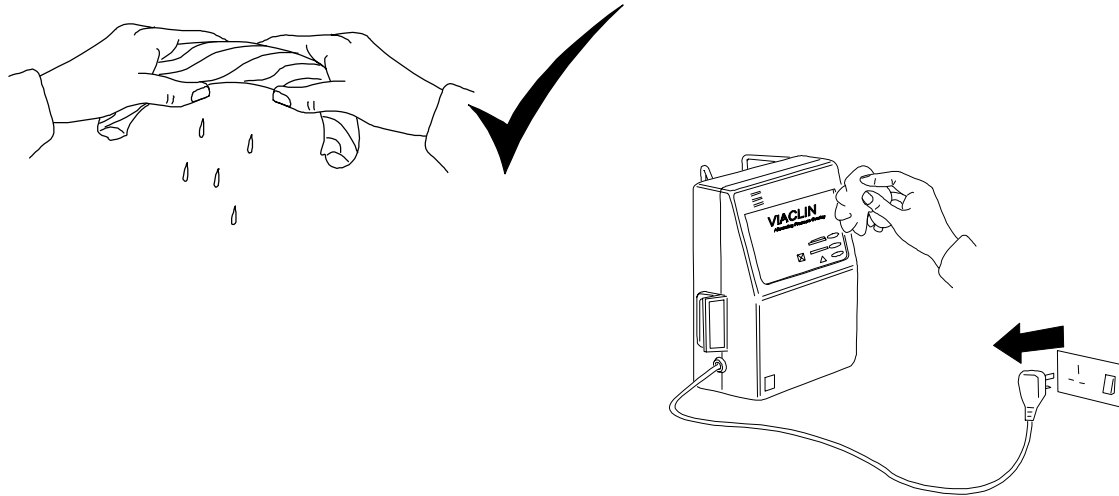


CAUTION:

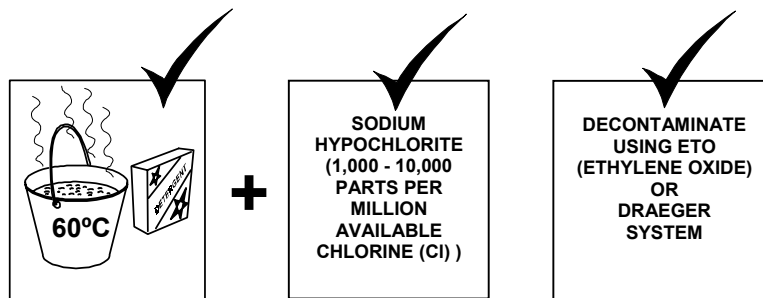
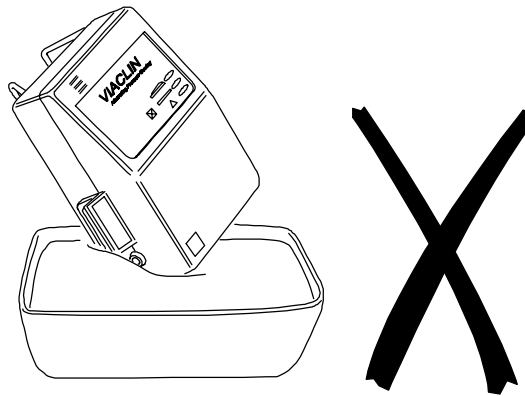


POWER UNIT






Cleaning procedure



CAUTION



SECTION H – TECHNICAL DATA

| | | | | | |
|------------------------------------|--|---|-------------------|--------|--------------------|
| Cycle Control | Purpose designed distributor valve supplying operating air to the inflatable cells | | | | |
| Cycle Time | 12 minutes | | | | |
| Supply Voltage | 220/240Vac 50Hz | | | | |
| Power Rating | 40VA | | | | |
| Fuse Rating | 2A Circuit Breaker | | | | |
| Noise Level | NC30 | | | | |
| Nominal Dimensions | Mattress (Inflated) | | Mattress (narrow) | | Power Unit |
| | Length: | 1900mm | Length | 1900mm | Height: 300mm |
| | Width: | 880mm | Width | 800mm | Width: 220mm |
| | Height: | 130mm | Height | 130mm | Depth: 130mm (max) |
| | Weight: | 3.8kg | Weight | 3.5kg | Weight: 2.7kg |
| Electrical Safety | Conforms to BSEN 60601-I | | | | |
| Classification | Class 2, Type B | | | | |
| Mode of Operation | Continuous | | | | |
| Symbols |  | Alternating Current | | | |
| |  | Mains Switch - 1 (On) Power connected to the mains supply 0 (Off) Power disconnected from mains supply | | | |
| |  | | | | |
| |  | Class 2 | | | |
| |  | Type B | | | |
| Environment (Usage and Storage) | Air Humidity: 10% to 85% Ambient Temperature: -10°C to 60°C | | | | |
| EMC | This equipment complies with EMC requirements. If effects are noticed the affected equipments should be moved apart. | | | | |



This product carries the CE mark in accordance with EC Directive on Medical Devices (93/42/EEC).

Pegasus Limited cannot be held responsible for any damage caused to our products (by foreign objects – needles, sharps, eating utensils, etc) other than due to normal wear and tear as defined in the product warranty agreement. Nor for any injury or incident which relates to the use of cot sides, profiling or any other mechanical or electrical device used in conjunction with this product unless supplied and/or manufactured by Pegasus Limited.

PART 2

VIACLIN™
Model 2502



PART 2

VIACLIN

Model 2502

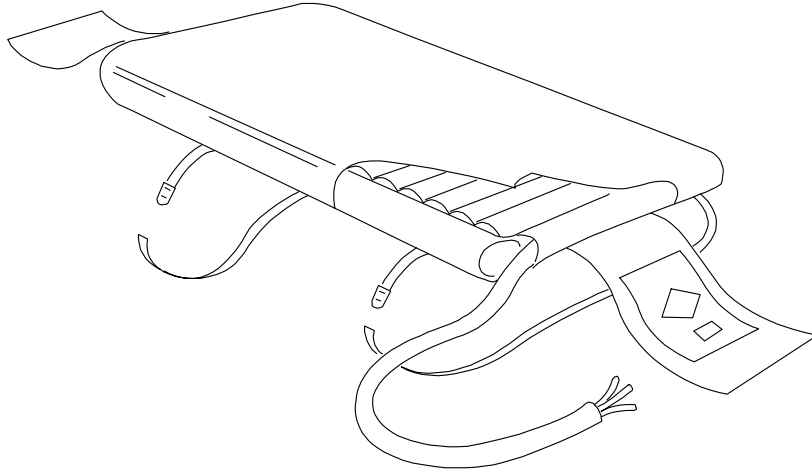
CONTENTS

| SECTION | | PAGE |
|----------------|---|-------------|
| A | GETTING STARTED | 2-2 |
| | List of Parts | 2-2 |
| | Setting Up | 2-3 |
| B | PROFILING AND KNEE BREAKING | 2-6 |
| C | MOVING THE BED AND POWER CUTS | 2-7 |
| | Overlay | 2-7 |
| | Power Unit | 2-7 |
| D | CPR (CARDIO PULMONARY RESUSCITATION) | 2-8 |
| E | DEFLATION, REMOVAL, CARRYING AND STORAGE | 2-8 |
| | Power Unit | 2-8 |
| | Overlay | 2-8 |
| F | ALARMS AND FAULT FINDING | 2-9 |
| | Alarms | 2-9 |
| | Fault Finding | 2-9 |
| G | CLEANING | 2-10 |
| | Overlay and Cover | 2-10 |
| | Power Unit | 2-11 |
| H | USER SERVICING AND SERVICE | 2-12 |
| I | TECHNICAL DATA | 2-13 |

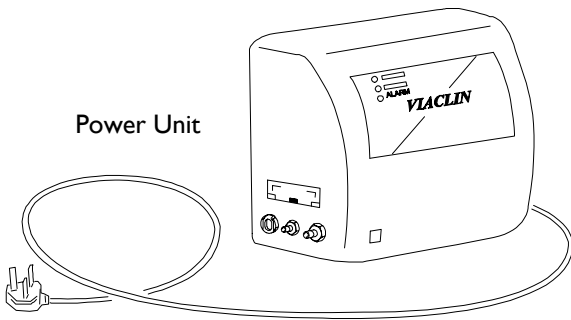
SECTION A – GETTING STARTED

LIST OF PARTS

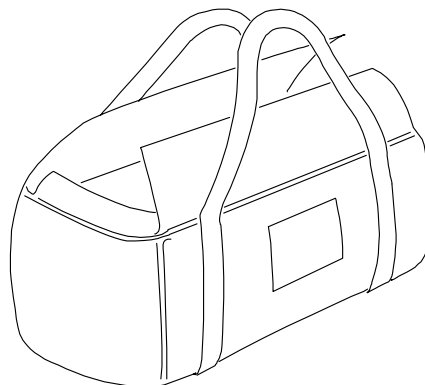
Mattress



Power Unit



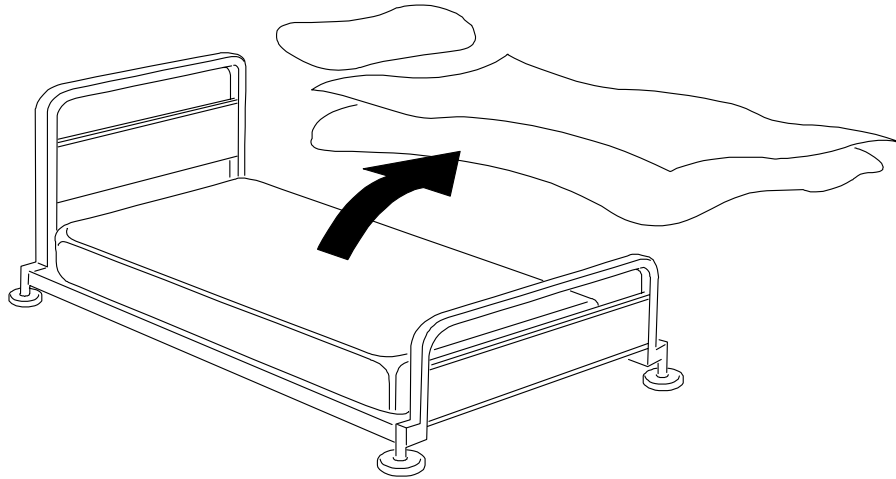
Carry Bag (Optional Extra)



SETTING UP

CAUTION: Use only on top of the existing bed mattress.

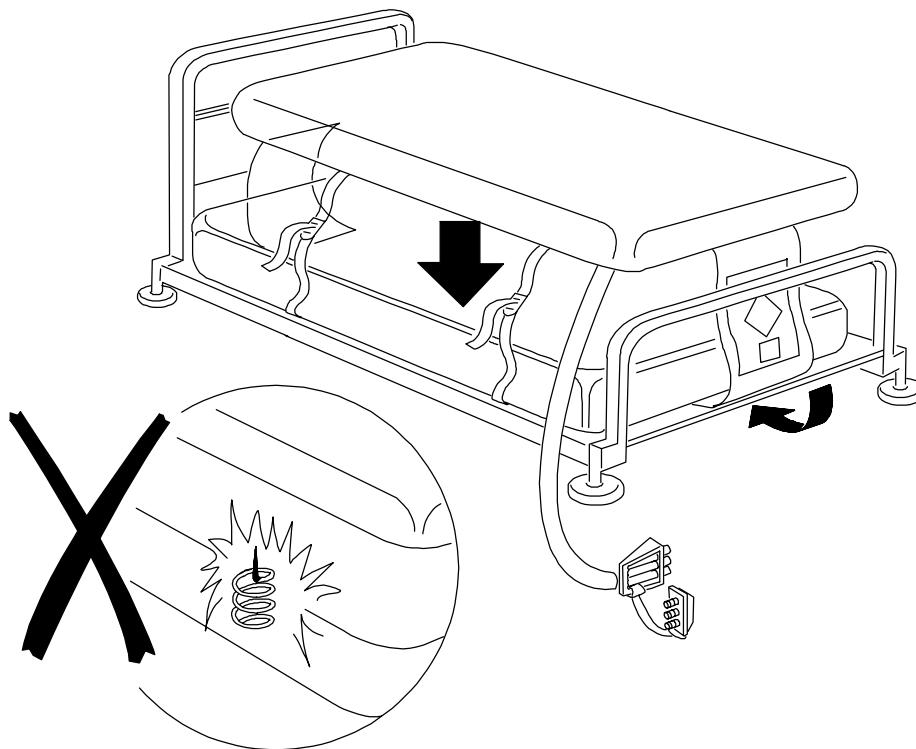
1. Remove the bedding from the bed.



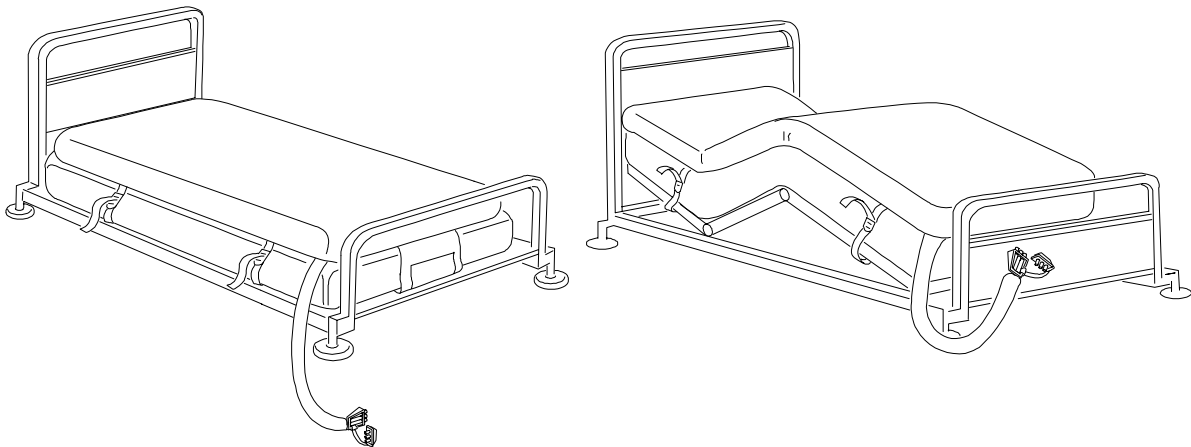
2. Place the Overlay on top of the bed mattress with the printed end flap at the bed foot end.

Tuck the two end flaps under the bed mattress.

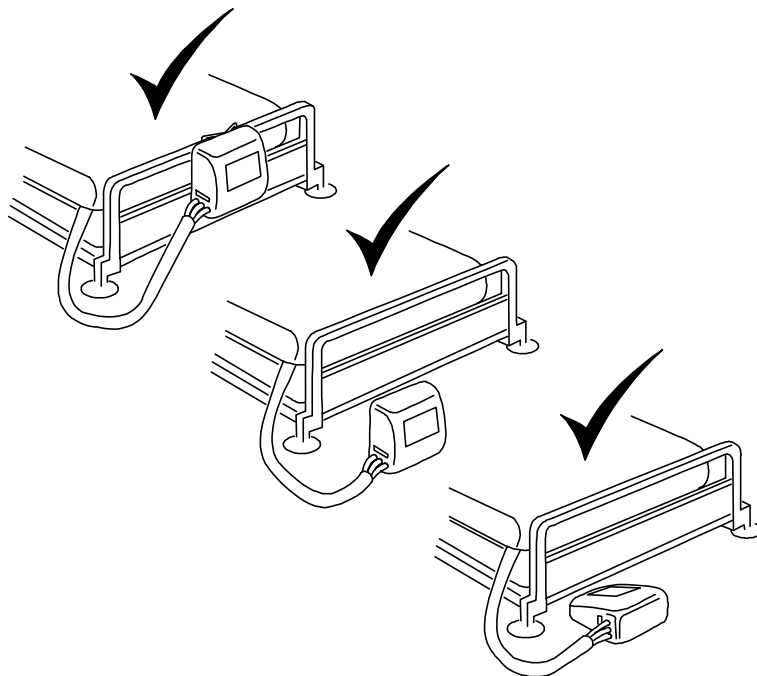
Ensure there are no sharp objects to damage the Overlay.



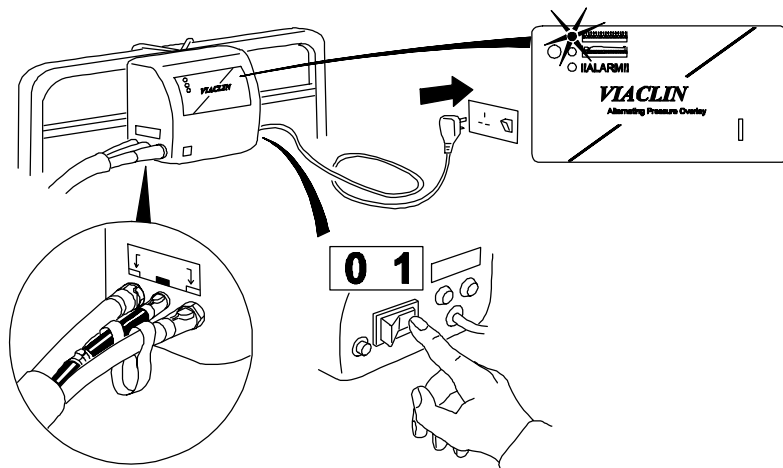
3. Secure the Overlay straps loosely to the moving parts of the bed frame, if applicable. Do not secure to removable head or foot boards.



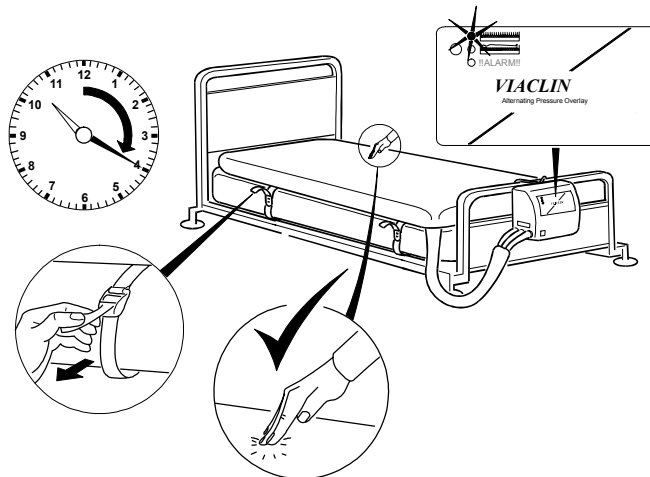
4. Hang the power unit on the bed or place on the floor.



5. Connect the three airpipe connectors on to the power unit connectors. Plug the power unit into a suitable mains socket and switch on.



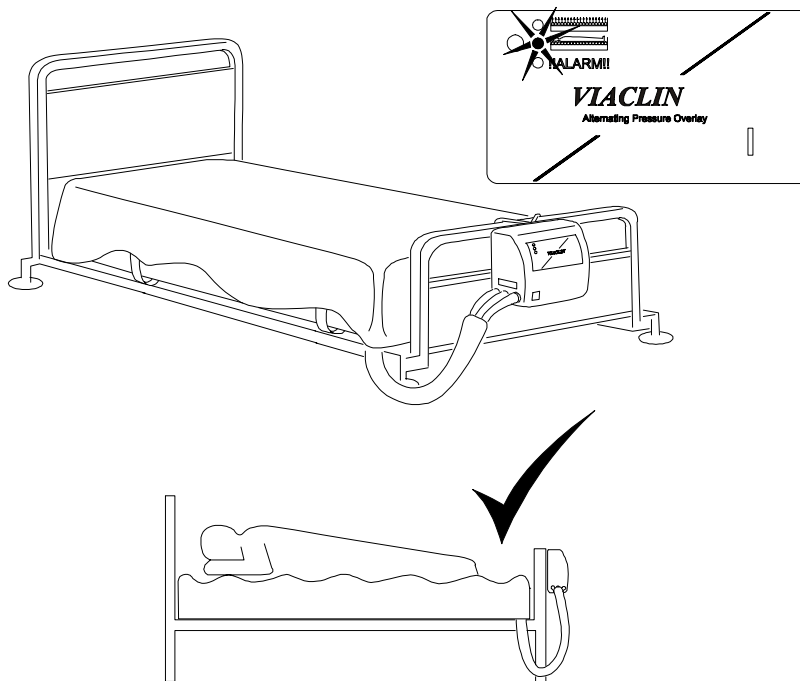
6. Check Overlay is inflating (this will take approximately 20 minutes) and the status light is amber.



7. Check Overlay, re-tighten straps if required.

Place one sheet loosely over the Overlay.

When the system is ready for the patient, the status lamp turns green.

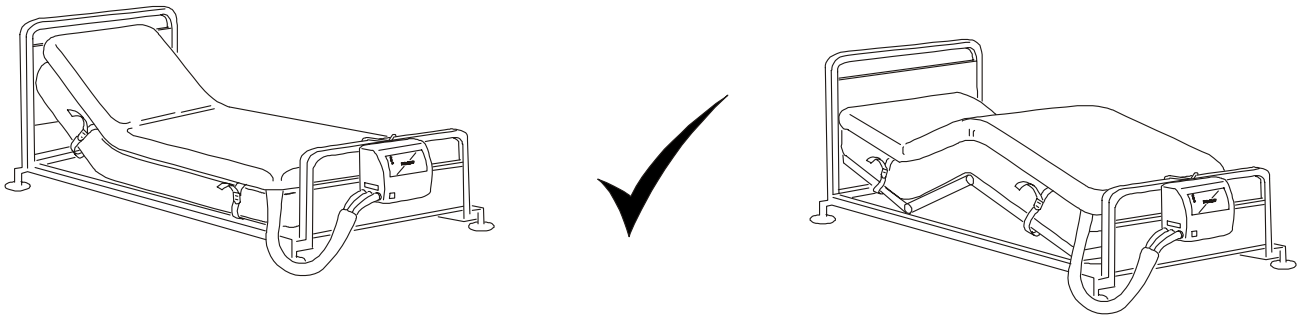


If the system does not perform as described above, please refer to Section F of this user guide.

SECTION B – PROFILING AND KNEE-BREAKING

The system may be used while the bed is in the profiled or knee-break position:

1. With the bed in its present position, loosen the Overlay securing straps.
2. Change the bed to the required position (profile or knee-break).
3. Re-tighten the securing straps.



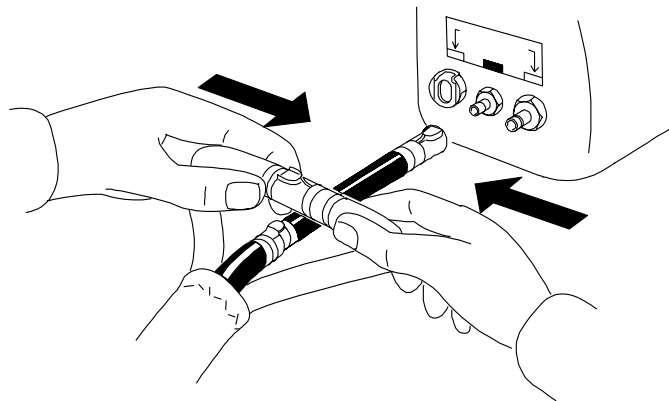
SECTION C – MOVING THE BED AND POWER CUTS

CAUTION: The patient will not receive the benefit of the VIACLIN system while it is disconnected and the power unit is switched off. Therefore the system should be reconnected as soon as possible once the bed has been moved to its new position.

If you need to move the bed with the Overlay still inflated or in the event of a major mains power failure, carry out the following procedure:

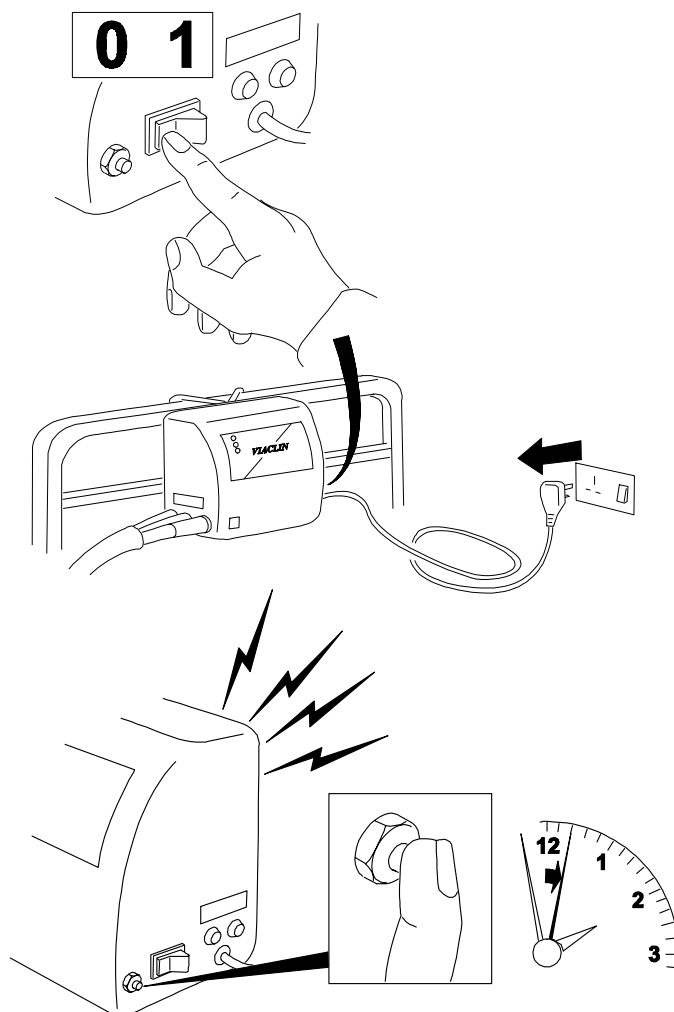
1. OVERLAY

- a. Disconnect the two red airpipes from the power unit and quickly connect together.
- b. Disconnect the black airpipe from the power unit.



2. POWER UNIT

- a. Switch off and reset the power-down alarm. Disconnect from the mains.

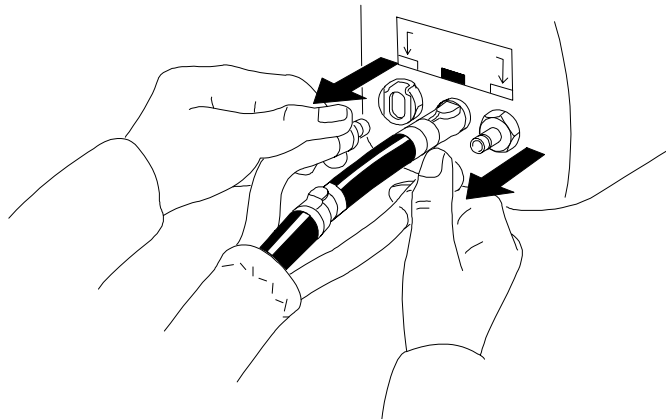


- b. The overlay will remain inflated for over 24 hours. The bed can now be moved.

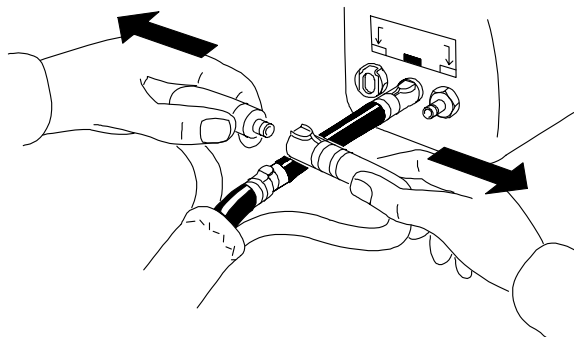
SECTION D – CPR (CARDIO PULMONARY RESUSCITATION)

In the event of cardiac arrest, disconnect both red airpipes:

1. While system is operating normally, disconnect from the power unit.



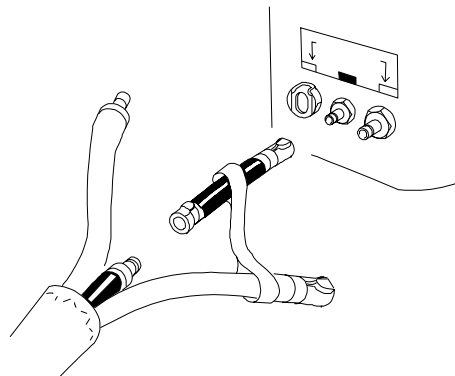
2. While moving the bed, disconnect from each other.



SECTION E – DEFLATION, REMOVAL, CARRYING AND STORAGE

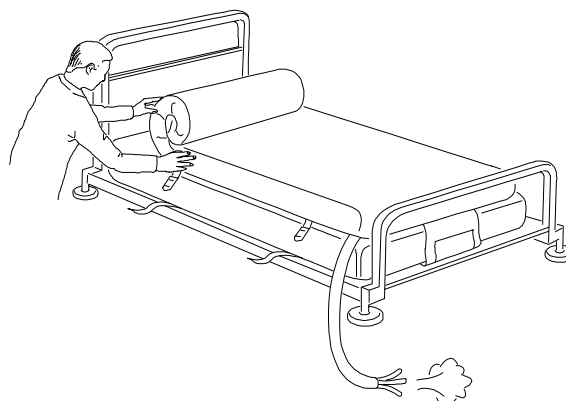
POWER UNIT

1. Switch off.
2. Silence alarm.
3. Disconnect from mains.
4. Disconnect all airpipes.
5. Remove from bed.



OVERLAY

1. Undo all securing straps.
2. Roll up the Overlay.



SECTION F – ALARMS AND FAULT FINDING

ALARMS

The **VIACLIN** Alternating Pressure Mattress Overlay is equipped with a sophisticated set of alarm functions, these alert the user to the status of the available mains supply and any mattress overlay defect.

In normal conditions with mains power available, the power unit turned on, the mattress overlay fully inflated and alternating, the status light on the power unit front panel will be green.

If at any time the mains power should be removed from the power unit, an audible alarm will be heard. This audible alarm may be cancelled by pressing the alarm reset button for approximately 2 seconds.

If the product develops a defect whilst in use, the status light will turn red and an audible alarm will be heard. This alarm may be cancelled by turning the mains power switch on the side of the power unit to the OFF (O) position, then pressing the alarm reset button for approximately 2 seconds.

FAULT FINDING

| SYMPTOM | ACTION |
|--|--|
| No lights on power unit | Check power unit is connected to the mains power supply and that the power unit switch is turned to the ON (I) position. |
| Status light red and alarm sounding, or alarm sounding but no lights | Turn mains switch on power unit OFF, press alarm reset button for approximately 2 seconds until alarm cancels, then switch on again: a. If the status light does not illuminate, mains power to the power unit has been lost. Check that the power unit is connected to the mains supply and that the power unit switch is turned to the ON (I) position b. If the alarm clears then returns after approximately 12 minutes, check air connection between power unit and mattress overlay, ensuring that all air connectors are pushed fully home and that the airpipe is not folded or bent causing air flow to be reduced. Turn mains switch on power unit OFF, press the alarm reset button for approximately 2 seconds until alarm cancels, then switch on again |
| Mattress overlay not inflating, status light green | Check all air pipes as in (b) above |

If the problem persists then contact your local distributor.

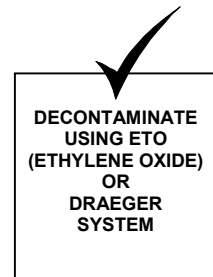
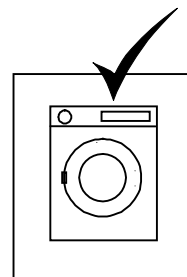
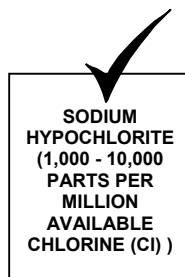
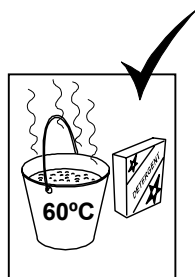
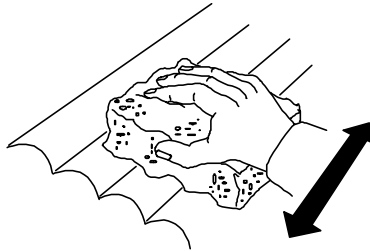
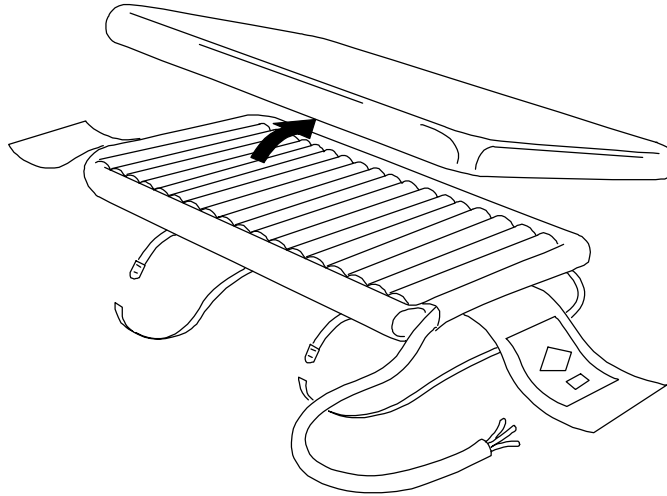
SECTION G – CLEANING

It is recommended that the system is cleaned regularly and after each patient use.

OVERLAY AND COVER Cleaning procedure

In many cases it will only be necessary to remove the overlay cover for cleaning. Where there is obvious soiling, a full cleaning or sterilization procedure will have to be carried out.

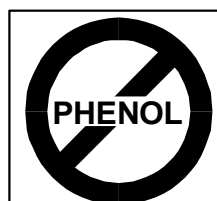
Ensure overlay and cover are fully dry before use



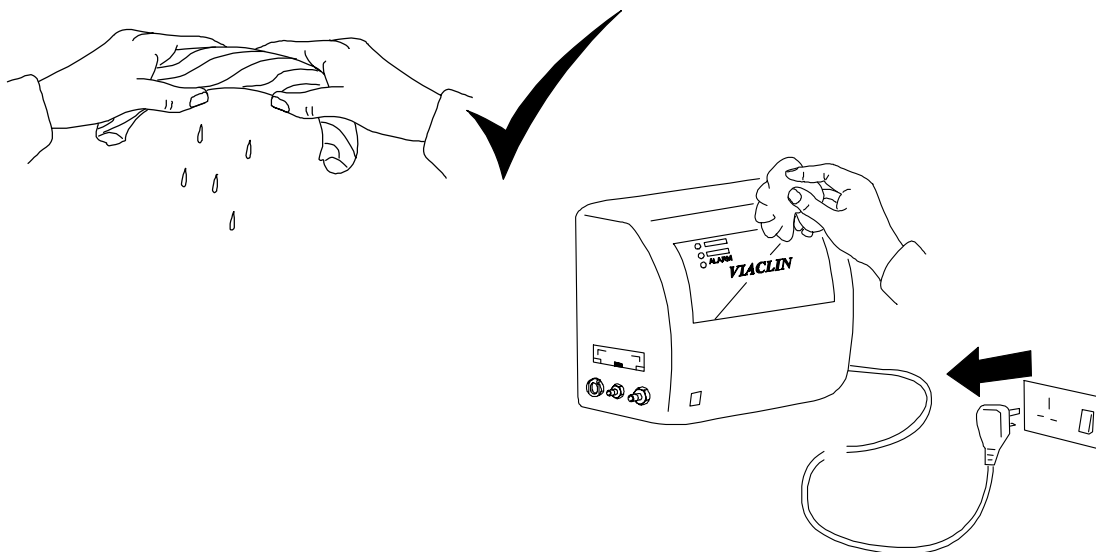
COVER ONLY



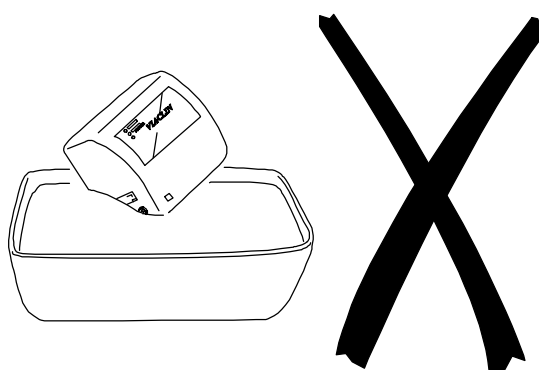
CAUTION:



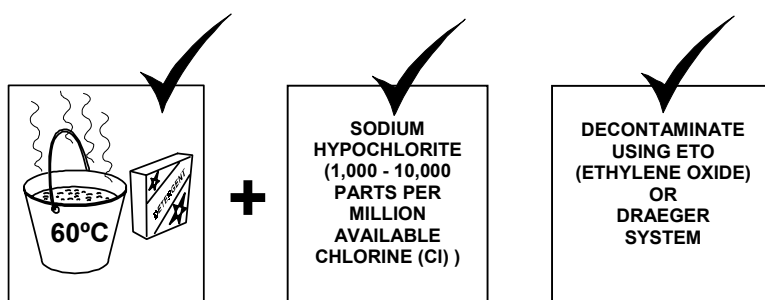
POWER UNIT



CAUTION



Cleaning procedure



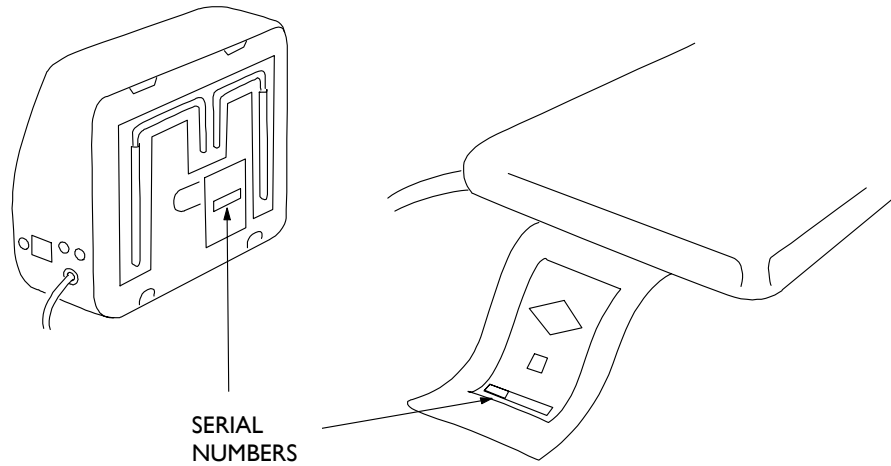
CAUTION:





SECTION H – USER SERVICING AND SERVICE

The **VIACLIN** System has been designed for ease of use and, with exception of cleaning, there are no user serviceable items. If you have any queries about the operation of the system contact your local distributor.

To help identify the system when telephoning, please refer to the unit serial numbers, which you will find on the power unit and mattress Overlay as shown below.



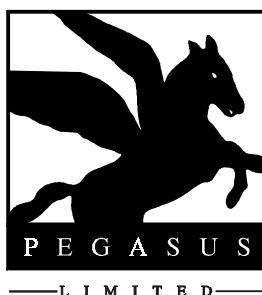
SECTION I – TECHNICAL DATA

| | | | | | |
|---------------------------------|--|---|-------------------|--------|--------------------|
| Cycle Control | Purpose designed distributor valve supplying operating air to the inflatable cells | | | | |
| Cycle Time | 12 minutes | | | | |
| Supply Voltage | 220/240Vac 50Hz | | | | |
| Power Rating | 40VA | | | | |
| Fuse Rating | Power Unit: 1A Antisurge (x2) Mains Plug: 3A | | | | |
| Noise Level | NC30 | | | | |
| Nominal Dimensions | Mattress (Inflated) | | Mattress (narrow) | | Power Unit |
| | Length: | 1900mm | Length | 1900mm | Height: 203mm |
| | Width: | 880mm | Width | 800mm | Width: 220mm |
| | Height: | 130mm | Height | 130mm | Depth: 115mm (max) |
| | Weight: | 3.8kg | Weight | 3.5kg | Weight: 2.3kg |
| Electrical Safety | Conforms to BSEN 60601-1 | | | | |
| Classification | Class I, Type B | | | | |
| Mode of Operation | Continuous | | | | |
| Symbols |   | Alternating Current | | | |
| | | Mains Switch - I (On) Power connected to the mains supply 0 (Off) Power disconnected from mains supply | | | |
| | | Type B | | | |
| | | | | | |
| Environment (Usage and Storage) | Air Humidity: 30% to 75% Ambient Temperature: 0°C (32°F) to 40°C (104°F) | | | | |
| EMC | This equipment complies with EMC requirements. If effects are noticed the affected equipments should be moved apart. | | | | |



This product carries the CE mark in accordance with EC Directive on Medical Devices (93/42/EEC).

Pegasus Limited cannot be held responsible for any damage caused to our products (by foreign objects – needles, sharps, eating utensils, etc) other than due to normal wear and tear as defined in the product warranty agreement. Nor for any injury or incident which relates to the use of cot sides, profiling or any other mechanical or electrical device used in conjunction with this product unless supplied and/or manufactured by Pegasus Limited.



PEGASUS LIMITED

Pegasus House

Waterberry Drive Waterlooville Hampshire

PO7 7XX England

Tel: +44 (0) 23 9278 4200

Fax: +44 (0) 23 9278 4250

E-Mail: custserv@pegasus-uk.com

Website: www.pegasus-uk.com

PEGASUS

and the associated device marks are Trademarks of Pegasus Limited.

Pegasus Limited has a policy of continuous product improvement and reserves the right to amend specifications presented in this brochure.

